

[illegible][illegible]

A NEW
wildflowers
ATLAS
OF THE
MUNDANE SYSTEM;
OR, OF
GEOGRAPHY
AND
COSMOGRAPHY:
DESCRIBING THE
HEAVENS AND THE EARTH,
THE DISTANCES, MOTIONS AND MAGNITUDES
OF THE
CELESTIAL BODIES:
THE VARIOUS EMPIRES, KINGDOMS, STATES, REPUBLICS,
AND ISLANDS, THROUGHOUT THE KNOWN WORLD;
WHEREIN ARE PARTICULARLY RECORDED THE LATEST DISCOVERIES.
THE WHOLE ELEGANTLY ENGRAVED ON SIXTY-FOUR COPPER PLATES,
WITH A GENERAL INTRODUCTION TO GEOGRAPHY AND COSMOGRAPHY,
IN WHICH THE ELEMENTS OF THESE SCIENCES ARE COMPENDIOUSLY
DEDUCED FROM ORIGINAL PRINCIPLES, AND TRACED FROM
THEIR INVENTION TO THE LATEST IMPROVEMENTS.

THE SECOND EDITION, WITH ADDITIONAL CORRECTIONS, AND VERY GREAT IMPROVEMENTS.

BY SAMUEL DUNN,

RESIDENT PHYSICIAN, AND MEMBER OF THE PHILOSOPHICAL SOCIETY AT PHILADELPHIA IN AMERICA.

L O N D O N :

PRINTED FOR ROBERT SAYER, No. 53, FLEET-STREET.

M DCC LXXXVIII.

Paradise lost.

A

POEM

Written in

TEN BOOKS

By JOHN MILTON.

Licensed and Entred according
to Order.

L O N D O N

Printed, and are to be sold by Peter Parker
under Creed Church neer Aldgate; And by
Robert Baulter at the Turk's Head in Bishopsgate-street;
And Matthias Walker, under St. Dunstons Church
in Fleet-street, 1667.

112 27



las.

The Sea Atlas.

wildflowers

words



wildflowers

Paradise Lost

wildflowers

E O G R A P H

P O E M

M

Written in

LEN B O O K

JOHN MILTON

Entered according to Act of Congress

1860

L O N D O N

Printed and sold by J. Parker
under the Church, under the Archway, And by
Robert Baskin, the Printer, in Bishopsgate-street;
And Manby Walker, at 5, Dunstons Court,
St. Dunstons, 1860

L O N D O N

PRINTED BY ROBERT SAYER, No. 53, FLEET-STREET.

M DCC LXXXVII

112 13

12
SWEET ECHO,

A celebrated Song,

Sung by Miss Stephens,

COMUS.

Pr. 1st

Printed & Sold by G. WALKER, Publisher of Books and Music, Nos 105 & 106 Great Portland Str.

Sweet Echo sweetest Nymph that liv'st un - seen with -
in thy Al - ry Cell by slow MRANDERS mar - - gin green
and in the Violet embroider'd Vale where the Love torn Nightingale
Nigh - ly to thee her sad song mourneth well
canst thou not tell me, not tell me of a gentle Pair, that liketh thy NARCISSUS NAR

She Walks In Beauty

By

Lord Byron

12
SWEET ECHO,

A celebrated Song,

She walks in beauty, like the night
Of cloudless climes and starry skies;
And all that's best of dark and bright. Meet

in her aspect and her eyes;

Thus mellow'd to that tender light

Which heaven to gaudy day denies.

One shade the more, one ray the less,

Had half impair'd the nameless grace

Which waves in every raven tress,

Or softly lightens o'er her face;

Where thoughts serenely sweet express,

How pure, how dear their dwelling place.

And on that cheek, and o'er that brow,

So soft, so calm, yet eloquent,

The smiles that win, the tints that glow,

But tell of days in goodness spent,

A mind at peace with all below,

A heart whose love is innocent!

Or softly lightens o'er her face;
Where thoughts serenely sweet express,
How pure, how dear their dwelling place.
And on that cheek, and o'er that brow,
So soft, so calm, yet eloquent,
The smiles that win, the tints that glow,
But tell of days in goodness spent,
A mind at peace with all below,
A heart whose love is innocent!



A detailed botanical illustration of a Foxglove (Digitalis purpurea) plant. The plant features a tall, slender green stem with several large, bell-shaped flowers in shades of red, pink, and yellow. The leaves are green and lanceolate. The illustration is set against a light, textured background with faint, repeating text from the reverse side of the paper.

[illegible]

A detailed botanical illustration of a plant, likely a species of Verbena. The plant features a thick, woody stem that branches out. Several large, green, lanceolate leaves with prominent veins are attached to the stem. The plant has multiple clusters of small, purple, tubular flowers with yellow centers. The background is a light, textured surface with faint, illegible text, suggesting it is a page from an old book or manuscript.

[illegible]

A detailed botanical illustration of a flowering plant, likely a species of *Salvia* (Sage), characterized by its red, tubular flowers and green, lanceolate leaves. The plant is shown in a naturalistic setting, with other foliage and insects (a butterfly and a bee) visible in the background. The illustration is part of a larger work, with faint text visible in the background.



Butterflies

A Celebrated Song

Sung by Miss Stephens.
COLUMBIA

PR

Printed & Sold by G. WALKER, Publisher of Books and Music, 105 & 106 Great Portland

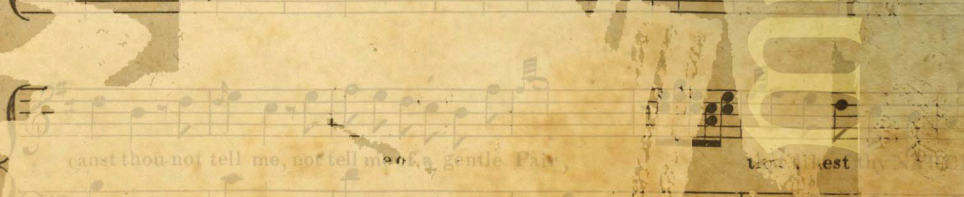
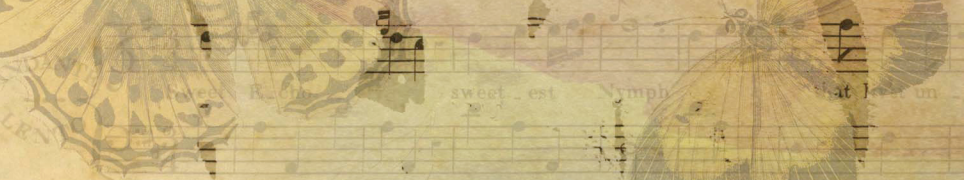


SWEET ECHO

A Celebrated Song

Sung by Miss Stephens.
COLUMBIA

Printed & Sold by G. WALKER, Publisher of Books and Music, 105 & 106 Great Portland



And in the Violet embroidered Vale
where the Love-lorn Nightingale
mourneth well
Nightingale to thee her sad song
mourneth well
canst thou not tell me, nor tell me of a
gentle PAN
that liketh thy NARCISSUS NAR



She Walks In Beauty

By
Lord Byron

She walks in beauty, like the night
Of cloudless climes and starry skies;
And all that's best of dark and bright, meet
In her aspect and her eyes;
Thus mellowed to that tender light
Which heaven to gaudy day denies.
One shade the more, one ray the less,
Had half impaired the nameless grace
Which waves in every raven tress,
Or softly lightens o'er her face;
Where thoughts serenely sweet express,
How pure, how dear their dwelling place.
And on that cheek, and o'er that brow,
So soft, so calm, yet eloquent,
The smiles that win, the tints that glow,
But tell of days in goodness spent,
A mind at peace with all below,
A heart whose love is innocent!



A NEW

ATLAS

OF THE

MUNDANE SYSTEM;

OR, OF

GEOGRAPHY

AND

COSMOGRAPHY:

DESCRIBING THE

HEAVENS AND THE EARTH,

THE DISTANCES, MOTIONS AND MAGNITUDES

OF THE

CELESTIAL BODIES;

THE VARIOUS EMPIRES, KINGDOMS, STATES, REPUBLICS,

AND ISLANDS, THROUGHOUT THE KNOWN WORLD;

WHEREIN ARE PARTICULARLY DESCRIBED THE LATEST DISCOVERIES

THE WHOLE ELEGANTLY ENGRAVED ON SIXTY-FOUR COPPER PLATES.

WITH A GENERAL INTRODUCTION TO GEOGRAPHY AND COSMOGRAPHY,

WHERE THE ELEMENTS OF THESE SCIENCES ARE COMPENDIOUSLY

TRACED FROM ORIGINAL PRINCIPLES, AND THENCE FROM

THEIR INVENTION TO THE LATEST IMPROVEMENTS.

WITH ADDITIONAL CORRECTIONS, AND VERY GREAT IMPROVEMENTS.

SAMUEL DUNN,

MEMBER OF THE PHILOSOPHICAL SOCIETY AT PHILADELPHIA IN AMERICA.

5b.

5.

LONDON:

PRINTED BY ROBERT SAYER, No. 53, FLEET-STREET.

MDCCLXXXVIII.

Pieris brassicae, 2a. Female, 2b. Larva, 2c. Pupa. 3. *Pieris rapae*.

4. *Pieris brassicae*, Under side. 5. *Pieris dauidae*, 2a. Female, 2b. Under side.

Paradise Lost

A

POEM

Written in

TEN BOOKS

By JOHN MILTON

Licensed and Entred

to Order.

LONDON

Printed, and are to be sold by R. Parker,

under Creed Church near St. Dunstons Church

And Robert Boulter at the Turks Head in Bishopsgate Street

And Matthias Walker, under St. Dunstons Church

in Fleet-street, 1667.

412

27

ATLAS

OF THE

MUNDANE SYSTEM;

OR, OF

GEOGRAPHY

AND

COSMOGRAPHY:

DESCRIBING THE

HEAVENS AND THE EARTH,

THE DISTANCES, MOTIONS AND MAGNITUDES

OF THE

CELESTIAL BODIES:

THE VARIOUS EMPIRES, KINGDOMS, STATES, REPUBLICS,

AND ISLANDS, THROUGHOUT THE KNOWN WORLD;

AND ARE PARTICULARLY DESCRIBED THE LATEST DISCOVERIES

ELEGANTLY ENGRAVED ON SIXTY-FOUR COPPER PLATES.

WITH A GENERAL INTRODUCTION TO GEOGRAPHY AND COSMOGRAPHY,

WHERE THE ELEMENTS OF THESE SCIENCES ARE COMPENDIOUSLY
EXTRACTED FROM ORIGINAL PRINCIPLES, AND TRACED FROM
THEIR INVENTION TO THE LATEST IMPROVEMENTS.

THIS EDITION, WITH ADDITIONAL CORRECTIONS, AND VERY GREAT IMPROVEMENTS

BY SAMUEL DUNN,

ASSISTANT AND MEMBER OF THE PHILOSOPHICAL SOCIETY AT PHILADELPHIA IN AMERICA.

5b.

5.

LONDON:

ROBERT SAYER, No. 53, FLEET-STREET.

MDCCLXXXVIII.



Paradise Lost.

A

POEM

Written in

TEN BOOKS

By JOHN MILTON.

Licensed and Printed according to Order.

LONDON

Printed, and are to be sold by Wm. Atterbury
under Creed Church near St. Dunstons Church
Robert Baulter at the Turk's Head in Bishopsgate-street
And Matthias Walter, under St. Dunstons Church
in Fleet-street, 1667.

112



A NEW

WILDFLOWERS A T L A S

OF THE

MUNDANE SYSTEM;

OR, OF

GEOGRAPHY

AND

COSMOGRAPHY:

DESCRIBING THE

HEAVENS AND THE EARTH,

THE DISTANCES, MOTIONS AND MAGNITUDES

OF THE

CELESTIAL BODIES:

THE VARIOUS EMPIRES, KINGDOMS, STATES, REPUBLICS,

AND ISLANDS, THROUGHOUT THE KNOWN WORLD;

WHEREIN ARE PARTICULARLY DESCRIBED THE LATEST DISCOVERIES.

THE WHOLE ELEGANTLY ENGRAVED ON SIXTY-FOUR COPPER PLATES.

WITH A GENERAL INTRODUCTION TO GEOGRAPHY AND COSMOGRAPHY,

IN WHICH THE ELEMENTS OF THESE SCIENCES ARE COMPENDIOUSLY

DEDUCED FROM ORIGINAL PRINCIPLES, AND TRACED FROM

THEIR INVENTION TO THE LATEST IMPROVEMENTS.

THE SECOND EDITION, WITH ADDITIONS, CORRECTIONS, AND VERY GREAT IMPROVEMENTS.

BY SAMUEL DUNN,

RECTOR OF ST. ANDREW'S CHURCH, AND MEMBER OF THE PHILOSOPHICAL SOCIETY AT PHILADELPHIA IN AMERICA.

L O N D O N :

PRINTED FOR ROBERT SAYER, No. 53, FLEET-STREET.

M DCC LXXXVIII.

WILDFLOWERS Paradise Lost.

P O E M

Written in

T E N B O O K S

By JOHN MILTON.

Licenced and Entred according
to Order.

L O N D O N

Printed, and are to be sold by *Peter Parker*
under *Creed Church* neer *Aldgate*; And by
Robert Baulter at the *Turk's Head* in *Bishopsgate-street*;
And *Mathias Walker*, under *St. Dunstons Church*
in *Fleet-street*, 1667.

112 27

